

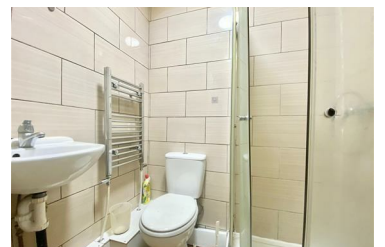


Flat 3, 11A Mapperley Park Drive, Nottingham, NG3 5BX

£675 Per month



3D Lets are offering this self contained, studio apartment in the popular location of Mapperley. The property benefits from a large reception area with seperate kitchen and shower room. Available for immediate occupation, this property is finished neutrally and offers off road parking on a first come first served basis. Contact today to view!



- Available now!
- Neutrally finished
- Great commute to the City Centre
- Council tax band A
- Contact today to view!
- Studio apartment with seperate kitchen
- Popular location in Mapperley
- Off street parking available
- EPC rating C
- Office reference 11AMPD